

Understanding the Growth Model

Proficiency Model

- Proficiency is defined as a “high degree of competency or skill”
- PARCC proficiency levels are 4 and 5
- iStation proficiency level is Tier 3

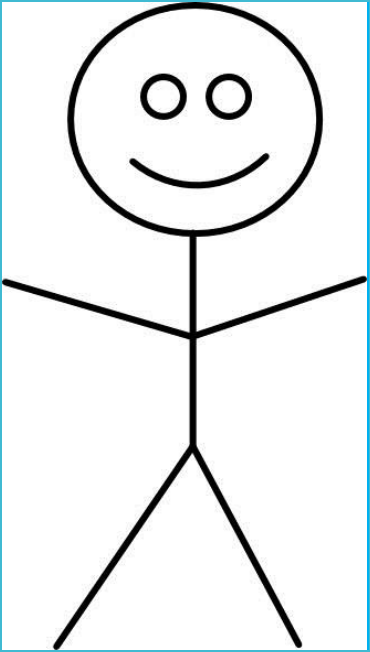


Growth Model

- Growth is defined by “development; gradual increase”
- Students can show growth, but not meet proficiency levels
- Students groups are used to compare growth



Student Peer Groups



Javyn- 5th Grade

What We Need to Know:

- Javyn's prior two years of PARCC data
 - 3rd grade Math PARCC: 685
 - 4th grade Math PARCC: 700

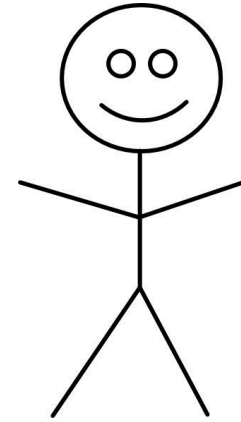
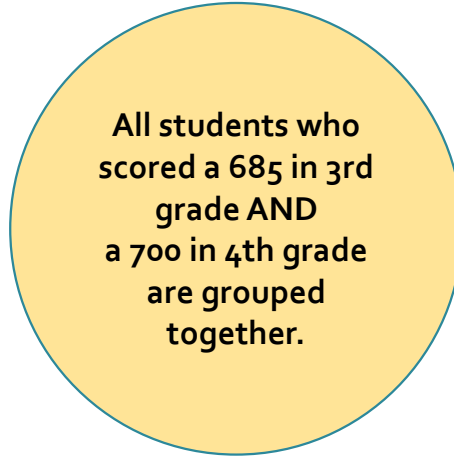
All students who scored a 685 in 3rd grade are grouped together

Then

All students who scored a 685 in 3rd grade AND a 700 in 4th grade are grouped together.

This is Javyn's Academic Peer Group

Value Added Scores



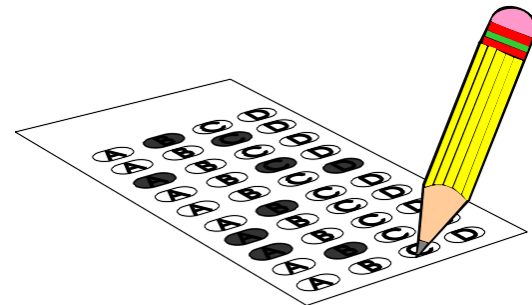
- **5th Grade Math PARCC**
- **Scores are averaged from the peer group to evaluate growth.**
 - If Javyn scores below the average of his student group then, VAS points will be negative.
 - If Javyn scores above the average of his student group then, VAS points will be positive.

Example

- If the average score of Javyn's student group was 705 and Javyn scored a 710, he showed more growth than the average, which would result in positive VAS points.
- If the average score of Javyn's student group was 705 and Javyn's friend Sally scored a 700, she showed less growth than the average, which would result in negative VAS points.



This line represents the average score of the academic peer group (705)



Questions?

-Handout